

EEK      EUR

**Radial duct fans type LKK**

LKK 100/1	1174	75
LKK 125/1	1221	78
LKK 160/1	1534	98
LKK 200/1	1815	116
LKK 250/1	2019	129
LKK 315/1	2488	159



**Radial duct fans type LVR**

LVR 40-20/20-4D	4210	269
LVR 40-20/20-4E	4539	290
LVR 50-25/22-4D	4773	305
LVR 50-25/22-4E	5118	327
LVR 50-25/22-6D	4695	300
LVR 50-30/25-4D	5712	365
LVR 50-30/25-4E	6025	385
LVR 50-30/25-6D	5243	335
LVR 60-30/28-4D	7512	480
LVR 60-30/28-4E	7778	497
LVR 60-30/28-6D	6260	400
LVR 60-35/31-4D	8842	565
LVR 60-35/31-6D	7903	505
LVR 70-40/35-4D	13459	860
LVR 70-40/35-6D	8921	570
LVR 70-40/35-8D	8921	570
LVR 80-50/40-4D	14868	950
LVR 80-50/40-6D	14398	920
LVR 80-50/40-8D	10955	700
LVR 90-50/45-4D	16589	1060
LVR 90-50/45-6D	16667	1065
LVR 90-50/45-8D	15885	1015



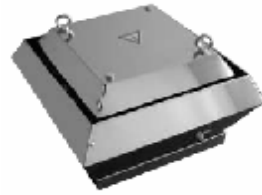
**Radial duct fans type LVP**

LVP 40-20/18-2D	4069	260
LVP 50-25/22-2D	4539	290
LVP 50-25/20-2D	4382	280
LVP 50-30/25-2D	5243	335
LVP 50-30/22-2D	4852	310
LVP 60-30/28-2D	6104	390
LVP 60-30/25-2D	5478	350
LVP 60-35/31-2D	7199	460
LVP 60-35/28-2D	6417	410
LVP 70-40/35-2D	10016	640
LVP 70-40/31-2D	7825	500
LVP 70-40/31-2DM	7512	480
LVP 80-50/35-2D	10329	660
LVP 80-50/40-4D	10329	660
LVP 90-50/40-2D	12833	820
LVP 90-50/35-2D	10799	690
LVP 90-50/40-4D	11112	710
LVP 100-50/40-2D	13459	860
LVP 100-50/45-4D	13929	890



### Roof fans type LVK

LVK 30/22-2E	5947	380
LVK 40/31-4D	5165	330
LVK 40/32-4D	5321	340
LVK 56/35-4D	6338	405
LVK 56/35-4E	7043	450
LVK 56/40-4D	7356	470
LVK 56/40-4E	7590	485
LVK 63/45-4D	8216	525
LVK 63/45-4E	8764	560
LVK 63/50-4D	11894	760
LVK 63/50-6D	10407	665
LVK 90/56-4D	15024	960
LVK 90/56-6D	12520	800
LVK 90/63-6D	16589	1060



### Duct water air-coolers type KWO

KWO 40-20	3443	220
KWO 50-25	3913	250
KWO 50-30	4304	275
KWO 60-30	4695	300
KWO 60-35	4930	315
KWO 70-40	6182	395
KWO 80-50	7356	470
KWO 90-50	7747	495
KWO 100-50	9234	590



### Duct freon air-coolers type KFO

KFO 40-20	4069	260
KFO 50-25	4539	290
KFO 50-30	4930	315
KFO 60-30	5399	345
KFO 60-35	5791	370
KFO 70-40	6730	430
KFO 80-50	7982	510
KFO 90-50	9077	580
KFO 100-50	10486	670



### Duct electric air-heaters type EKK

EKK 100/0,5	610	39
EKK 100/1,5	939	60
EKK 100/2	1142	73
EKK 100/2,5	1315	84
EKK 125/1,5	829	53
EKK 125/2	876	56
EKK 125/2,5	1049	67
EKK 125/3	1080	69
EKK 160/2	1158	74
EKK 160/3	1205	77
EKK 160/4,5	1440	92
EKK 160/6	1972	126
EKK 200/3	1268	81
EKK 200/6	1753	112
EKK 200/9	2160	138
EKK 200/12	2817	180
EKK 250/6	1894	121



EKK 250/9	1972	126
EKK 250/12	3020	193
EKK 250/15	3020	193
EKK 315/6	1956	125
EKK 315/9	2035	130
EKK 315/12	3114	199
EKK 315/15	3114	199
EKK 315/18	3287	210

### Duct electric air-heaters type EKN

EKN 40-20/6	2269	145
EKN 40-20/12	3130	200
EKN 50-25/7,5	2504	160
EKN 50-25/15	3678	235
EKN 50-25/22,5	4773	305
EKN 50-30/7,5	2582	165
EKN 50-30/15	3834	245
EKN 50-30/22,5	4930	315
EKN 60-30/15	4069	260
EKN 60-30/22,5	5321	340
EKN 60-30/30	6260	400
EKN 60-35/15	4147	265
EKN 60-35/22,5	5399	345
EKN 60-35/30	6417	410
EKN 70-40/15	4304	275
EKN 70-40/30	6495	415
EKN 70-40/45	7982	510
EKN 70-40/60	8373	535
EKN 80-50/15	4460	285
EKN 80-50/30	6651	425
EKN 80-50/45	8216	525
EKN 80-50/60	8529	545
EKN 90-50/30	6808	435
EKN 90-50/45	8921	570
EKN 90-50/60	9390	600
EKN 100-50/45	9234	590
EKN 100-50/60	9703	620



### Duct water air-heaters type WKK

WKK 160/2	1549	99
WKK 200/2	1659	106
WKK 250/2	2019	129
WKK 315/2	2833	181



### Duct water air-heaters type WKN

WKN 40-20/2	1800	115
WKN 50-25/2	2113	135
WKN 50-30/2	2269	145
WKN 60-30/2	2426	155
WKN 60-35/2	2661	170
WKN 70-40/2	3052	195
WKN 80-50/2	3756	240
WKN 90-50/2	3991	255
WKN 100-50/2	4539	290
WKN 40-20/3	2035	130
WKN 50-25/3	2426	155



WKN 50-30/3	2661	170
WKN 60-30/3	2895	185
WKN 60-35/3	3130	200
WKN 70-40/3	3834	245
WKN 80-50/3	4852	310
WKN 90-50/3	5165	330
WKN 100-50/3	6025	385

### Mixing units type SRP

SRP 40-1,0	7199	460
SRP 40-1,6	7199	460
SRP 40-2,5	7199	460
SRP 40-4,0	7199	460
SRP 60-4,0	7512	480
SRP 60-6,3	7512	480
SRP 80-6,3	9547	610
SRP 80-8,0	9547	610
SRP 80-12,0	14085	900
SRP 80-18,0	14242	910



### Duct plate heat exchangers type RPK

RPK 40-20	6104	390
RPK 50-25	7512	480
RPK 50-30	8138	520
RPK 60-30	9077	580
RPK 60-35	9390	600
RPK 70-40	11738	750
RPK 80-50	15337	980
RPK 90-50	16433	1050
RPK 100-50	20345	1300



### Duct cassette filter boxes type FKK

FKK 100	172	11
FKK125	203	13
FKK 160	235	15
FKK 200	266	17
FKK 250	313	20
FKK 315	376	24



### Duct cassette filter insets type FWK

FWK 100	78	5
FWK 125	94	6
FWK 160	110	7
FWK200	141	9
FWK250	188	12
FWK315	188	12

### Duct cassette filter boxes type KFK

KFK 40-20	516	33
KFK 50-25	563	36
KFK 50-30	595	38
KFK 60-30	626	40
KFK 60-35	657	42
KFK 70-40	736	47
KFK 80-50	892	57
KFK 90-50	1080	69



KFK 100-50	1158	74
------------	------	----

### Duct cassette filter insets type WFK

WFK 40-20	219	14
WFK 50-25	266	17
WFK 50-30	313	20
WFK 60-30	329	21
WFK 60-35	391	25
WFK 70-40	438	28
WFK 80-50	563	36
WFK 90-50	626	40
WFK 100-50	814	52

### Duct pocket filter boxes type KFR and KFU

KFR 40-20	563	36
KFR 50-25	689	44
KFR 50-30	704	45
KFR 60-30	798	51
KFR 60-35	829	53
KFR 70-40	939	60
KFR 80-50	1315	84
KFR 90-50	1487	95
KFR 100-50	1722	110



KFU 40-20	532	34
KFU 50-25	595	38
KFU 50-30	626	40
KFU 60-30	689	44
KFU 60-35	720	46
KFU 70-40	814	52
KFU 80-50	986	63
KFU 90-50	1221	78
KFU 100-50	1315	84



### Duct pocket filter insets type WRF

WRF 40-20 F7	297	19
WRF 40-20 F5	282	18
WRF 40-20 G3	266	17
WRF 50-25 F7	376	24
WRF 50-25 F5	329	21
WRF 50-25 G3	313	20
WRF 50-30 F7	407	26
WRF 50-30 F5	344	22
WRF 50-30 G3	329	21
WRF 60-30 F7	438	28
WRF 60-30 F5	376	24
WRF 60-30 G3	360	23
WRF 60-35 F7	470	30
WRF 60-35 F5	391	25
WRF 60-35 G3	376	24
WRF 70-40 F7	563	36
WRF 70-40 F5	423	27
WRF 70-40 G3	407	26
WRF 80-50 F7	689	44
WRF 80-50 F5	485	31
WRF 80-50 G3	470	30

WRF 90-50 F7	720	46
WRF 90-50 F5	516	33
WRF 90-50 G3	501	32
WRF 100-50 F7	783	50
WRF 100-50 F5	579	37
WRF 100-50 G3	548	35

#### Duct pocket filter insets type WUF

WUF 40-20 G3	266	17
WUF 50-25 G3	297	19
WUF 50-30 G3	313	20
WUF 60-30 G3	329	21
WUF 60-35 G3	329	21
WUF 70-40 G3	344	22
WUF 80-50 G3	360	23
WUF 90-50 G3	376	24
WUF 100-50 G3	407	26

#### Air damper ZOK

ZOK 100	141	9
ZOK 125	172	11
ZOK 160	203	13
ZOK 200	219	14
ZOK 250	282	18
ZOK 315	360	23
SP	16	1



#### Air damper ZOR

ZOR 40-20	579	37
ZOR 50-25	689	44
ZOR 50-30	829	53
ZOR 60-30	939	60
ZOR 60-35	955	61
ZOR 70-40	1205	77
ZOR 80-50	1565	100
ZOR 90-50	1800	115
ZOR 100-50	1956	125



#### Back draft shutter OPK

OPK 100	63	4
OPK 125	78	5
OPK 160	94	6
OPK 200	110	7
OPK 250	141	9
OPK 315	172	11



#### Sound attenuators KSK

KSK 100/6	407	26
KSK 100/9	532	34
KSK 125/6	485	31
KSK 125/9	626	40
KSK 160/6	563	36
KSK 160/9	720	46
KSK 200/6	657	42
KSK 200/9	845	54



KSK 250/6	767	49
KSK 250/9	986	63
KSK 315/6	1033	66
KSK 315/9	1346	86

### Sound attenuators KSG

KSG 40-20	1142	73
KSG 50-25	1628	104
KSG 50-30	1690	108
KSG 60-30	1800	115
KSG 60-35	1956	125
KSG 70-40	2817	180
KSG 80-50	3052	195
KSG 90-50	3600	230
KSG 100-50	3678	235



### Flexible connections WKG

WKG 40-20	235	15
WKG 50-25	266	17
WKG 50-30	282	18
WKG 60-30	297	19
WKG 60-35	313	20
WKG 70-40	360	23
WKG 80-50	391	25
WKG 90-50	501	32
WKG 100-50	548	35



### Clamps HSK

HSK 100	47	3
HSK 125	47	3
HSK 160	63	4
HSK 200	78	5
HSK 250	94	6
HSK 315	110	7



### Fan mounting frame OSK

OSK 100	78	5
OSK 125	78	5
OSK 160	94	6
OSK 200	94	6
OSK 250	125	8
OSK 315	157	10



### Electronic rpm regulators type FC

FC 2	563	36
------	-----	----

### Transformer rpm regulators type RE..., RD..., RET... and RDT

RE2G	1565	100
RE6G	1878	120
RD2G	3365	215
RD4	3991	255
RD7	5321	340
RD14	8529	545
RET 2 KTG	2661	170
RET 6 KTG	2895	185
RDT 2 KTG	3678	235



R-DT-4-KT	5165	330
R-DT-7-KT	6417	410
RTRD-14-E	10173	650

### Frequency rpm regulators type SINUS N and SINUS M

SINUS N 0002 2S XBK2	3130	200
SINUS N 0005 2S XBK2	4695	300
SINUS M 0007 4T BA2K2	7434	475
SINUS M 0011 4T BA2K2	9547	610



### Protective relays STDT16, S-ET10

STDT16	1534	98
S-ET 10	704	45



### Engine start-up and protection device UZ-V...

UZ-V 0,55	1080	69
UZ-V 1,1	1080	69
UZ-V 1,5	1080	69
UZ-V 2,2	1080	69
UZ-V 4	1158	74
UZ-V 5,5	1158	74



### Fans control panel PU-V...

PU-V0,55	4272	273
PU-V1,1	4272	273
PU-V1,5	4257	272
PU-V2,2	4288	274
PU-V4	4366	279
PU-V5,5	5274	337



### Control units type PUAT

Capacity of a single-phase heater up to **3kw**

PUAT-E3-10*	6964	445
PUAT-E3-11*	7199	460
PUAT-E9-30	9468	605
PUAT-E9-10	9234	590
PUAT-E9-31	9625	615
PUAT-E9-33	10329	660
PUAT-E9-11	9390	600
PUAT-E15-30	10251	655
PUAT-E15-10	10016	640
PUAT-E15-31	10486	670
PUAT-E15-33	11112	710
PUAT-E15-11	10173	650
PUAT-E22-30	10407	665
PUAT-E22-10	10173	650
PUAT-E22-31	10642	680
PUAT-E22-33	11268	720
PUAT-E22-11	10407	665



\*-to blocks of type PUAT-E3-... Single-phase fans with built in thermocontacts and automatic restart, only

Capacity of a three-phase heater up to **30 kw**

PUAT-E30-30	10642	680
PUAT-E30-10	10329	660
PUAT-E30-31	10720	685

PUAT-E30-33	11425	730
PUAT-E30-11	10642	680
PUAT-E45-30	17215	1100
PUAT-E45-10	16589	1060
PUAT-E45-31	17293	1105
PUAT-E45-33	17998	1150
PUAT-E45-11	16824	1075
PUAT-E60-30	20658	1320
PUAT-E60-10	19876	1270
PUAT-E60-31	20815	1330
PUAT-E60-33	21206	1355
PUAT-E60-11	20189	1290

### Control units type PUA 210

PUA 210-W-30	10955	700
PUA 210-W-10	10486	670
PUA 210-W-31	11425	730
PUA 210-W-33	11816	755
PUA 210-W-11	10720	685



### Control units type PUA 222

Capacity of a three-phase heater up to **9kw**

PUA 222-E9-30	13616	870
PUA 222-E9-10	13459	860
PUA 222-E9-31	13772	880
PUA 222-E9-33	14461	924
PUA 222-E9-11	13537	865



Capacity of a three-phase heater up to **15kw**

PUA 222-E15-30	14633	935
PUA 222-E15-10	14398	920
PUA 222-E15-31	14711	940
PUA 222-E15-33	15337	980
PUA 222-E15-11	14476	925

Capacity of a three-phase heater up to **22,5kw**

PUA 222-E22-30	14711	940
PUA 222-E22-10	14476	925
PUA 222-E22-31	14789	945
PUA 222-E22-33	15494	990
PUA 222-E22-11	14555	930

Capacity of a three-phase heater up to **30kw**

PUA 222-E30-30	14789	945
PUA 222-E30-10	14555	930
PUA 222-E30-31	14946	955
PUA 222-E30-33	15572	995
PUA 222-E30-11	14711	940

Capacity of a three-phase heater up to **45kw**

PUA 222-E45-30	21362	1365
PUA 222-E45-10	21049	1345
PUA 222-E45-31	21441	1370
PUA 222-E45-33	22145	1415
PUA 222-E45-11	21206	1355

Capacity of a three-phase heater up to **60kw**

PUA 222-E60-30	23084	1475
PUA 222-E60-10	22849	1460
PUA 222-E60-31	23162	1480
PUA 222-E60-33	23866	1525
PUA 222-E60-11	22927	1465

Blocks for management supply installations with water heaters and water coolers

PUA 222-W-30	11972	765
PUA 222-W-10	11581	740
PUA 222-W-31	12442	795
PUA 222-W-33	13068	835
PUA 222-W-11	11738	750

## Control units type PUA 236

Blocks for management supply installations with electric heaters and water (freon) coolers

Capacity of a three-phase heater up to **9kw**

PUA 236-E9-30	20580	1315
PUA 236-E9-10	20267	1295
PUA 236-E9-31	20658	1320
PUA 236-E9-33	21362	1365
PUA 236-E9-11	20502	1310

Capacity of a three-phase heater up to **15kw**

PUA 236-E15-30	21284	1360
PUA 236-E15-10	21049	1345
PUA 236-E15-31	21519	1375
PUA 236-E15-33	22223	1420
PUA 236-E15-11	21206	1355



Capacity of a three-phase heater up to **22,5kw**

PUA 236-E22-30	21362	1365
PUA 236-E22-10	21206	1355
PUA 236-E22-31	21597	1380
PUA 236-E22-33	22301	1425
PUA 236-E22-11	21284	1360

Capacity of a three-phase heater up to **30kw**

PUA 236-E30-30	21519	1375
PUA 236-E30-10	21362	1365
PUA 236-E30-31	21754	1390
PUA 236-E30-33	22380	1430
PUA 236-E30-11	21519	1375

Capacity of a three-phase heater up to **45kw**

PUA 236-E45-30	28248	1805
PUA 236-E45-10	28014	1790
PUA 236-E45-31	28405	1815
PUA 236-E45-33	29031	1855
PUA 236-E45-11	28170	1800

Capacity of a three-phase heater up to **60kw**

PUA 236-E60-30	29970	1915
PUA 236-E60-10	29657	1895
PUA 236-E60-31	30126	1925
PUA 236-E60-33	30674	1960
PUA 236-E60-11	29892	1910

Blocks for management supply installations with water heaters and water (freon) coolers

PUA 236-W-30	19797	1265
PUA 236-W-10	19484	1245
PUA 236-W-31	19876	1270
PUA 236-W-33	20502	1310
PUA 236-W-11	19563	1250

Extensions to blocks of management

1	501	32
3	673	43
A1; A1,6; A2,5; A4; A6,3	438	28
A10;A16	1252	80
F	1409	90
L	689	44
S	438	28
T	1878	120

### Temperature sensors

STK-1	548	35
STK-2	548	35
STK-1M	657	42
STK-2M	657	42
STP	313	20
STN	250	16
VSN	313	20
VSP	516	33



### Differential pressure sensors DPD...

DPD-2	563	36
DPD-5	470	30
DPD-10	470	30



### Capillary thermostats AZT...

AZT-0,6	1252	80
AZT-3	1064	68
AZT-6	1064	68



### Electric drives of air chokes

LM 24 A	1252	80
LM 24 A-SR	1800	115
LM 230 A	1252	80
LF 24	2191	140
LF 230	2269	145



### Three-way valves and drives

VXP 45.10-0,25	814	52
VXP 45.10-0,4	814	52
3MG 15-0,6	704	45
3MG 15-1,0	704	45
3MG 15-1,6	704	45
3MG 15-2,5	626	40
3MG 20-4,0	626	40
3MG 20-6,3	626	40
3MG 25-8,0	704	45
3MG 25-12,0	704	45



3MG 32-18	704	45
SSB 61	2097	134
ESBE 62P	2035	130
ALG 133	282	18

## Air curtains type ZWC

Without heating

ZWC 60-30 H/2	9014	576
ZWC 60-30 H/2,5	9500	607
ZWC 60-30 H/3	9969	637
ZWC 60-30 H/3,5	10689	683
ZWC 60-30 H/4	11174	714
ZWC 60-30 H/4,5	11659	745
ZWC 60-30 H/5	12379	791
ZWC 60-35 H/2	10454	668
ZWC 60-35 H/2,5	10845	693
ZWC 60-35 H/3	11252	719
ZWC 60-35 H/3,5	12144	776
ZWC 60-35 H/4	12536	801
ZWC 60-35 H/4,5	12943	827
ZWC 60-35 H/5	13819	883
ZWC 70-40M H/2	11143	712
ZWC 70-40M H/2,5	11597	741
ZWC 70-40M H/3	12066	771
ZWC 70-40M H/3,5	13021	832
ZWC 70-40M H/4	13490	862
ZWC 70-40M H/4,5	13944	891
ZWC 70-40M H/5	14899	952
ZWC 70-40 H/2	12645	808
ZWC 70-40 H/2,5	13099	837
ZWC 70-40 H/3	13569	867
ZWC 70-40 H/3,5	14523	928
ZWC 70-40 H/4	14993	958
ZWC 70-40 H/4,5	15447	987
ZWC 70-40 H/5	16401	1048
ZWC 80-50 H/2	13396	856
ZWC 80-50 H/2,5	14007	895
ZWC 80-50 H/3	14617	934
ZWC 80-50 H/3,5	15540	993
ZWC 80-50 H/4	16151	1032
ZWC 80-50 H/4,5	16761	1071
ZWC 80-50 H/5	17669	1129

With water heating

ZWC 60-30 W2/2	12551	802
ZWC 60-30 W2/2,5	13036	833
ZWC 60-30 W2/3	13506	863
ZWC 60-30 W2/3,5	14242	910
ZWC 60-30 W2/4	14711	940
ZWC 60-30 W2/4,5	15196	971
ZWC 60-30 W2/5	15916	1017
ZWC 60-35 W2/2	14304	914
ZWC 60-35 W2/2,5	14695	939
ZWC 60-35 W2/3	15102	965
ZWC 60-35 W2/3,5	15979	1021
ZWC 60-35 W2/4	16386	1047
ZWC 60-35 W2/4,5	16792	1073



ZWC 60-35 W2/5	17669	1129
ZWC 70-40M W2/2	15540	993
ZWC 70-40M W2/2,5	16010	1023
ZWC 70-40M W2/3	16464	1052
ZWC 70-40M W2/3,5	17434	1114
ZWC 70-40M W2/4	17888	1143
ZWC 70-40M W2/4,5	18357	1173
ZWC 70-40M W2/5	19312	1234
ZWC 70-40 W2/2	17043	1089
ZWC 70-40 W2/2,5	17512	1119
ZWC 70-40 W2/3	17966	1148
ZWC 70-40 W2/3,5	18937	1210
ZWC 70-40 W2/4	19390	1239
ZWC 70-40 W2/4,5	19860	1269
ZWC 70-40 W2/5	20815	1330
ZWC 80-50 W2/2	18827	1203
ZWC 80-50 W2/2,5	19437	1242
ZWC 80-50 W2/3	20048	1281
ZWC 80-50 W2/3,5	20971	1340
ZWC 80-50 W2/4	21581	1379
ZWC 80-50 W2/4,5	22192	1418
ZWC 80-50 W2/5	23099	1476

With electric heater

ZWC 60-30 E/2	13584	868
ZWC 60-30 E/2,5	14069	899
ZWC 60-30 E/3	14539	929
ZWC 60-30 E/3,5	15274	976
ZWC 60-30 E/4	15744	1006
ZWC 60-30 E/4,5	16229	1037
ZWC 60-30 E/5	16949	1083
ZWC 60-35 E/2	16307	1042
ZWC 60-35 E/2,5	16699	1067
ZWC 60-35 E/3	17105	1093
ZWC 60-35 E/3,5	17982	1149
ZWC 60-35 E/4	18389	1175
ZWC 60-35 E/4,5	18796	1201
ZWC 60-35 E/5	19672	1257
ZWC 70-40M E/2	16401	1048
ZWC 70-40M E/2,5	16855	1077
ZWC 70-40M E/3	17325	1107
ZWC 70-40M E/3,5	18279	1168
ZWC 70-40M E/4	18749	1198
ZWC 70-40M E/4,5	19203	1227
ZWC 70-40M E/5	20157	1288
ZWC 70-40 E/2	17904	1144
ZWC 70-40 E/2,5	18357	1173
ZWC 70-40 E/3	18827	1203
ZWC 70-40 E/3,5	19782	1264
ZWC 70-40 E/4	20251	1294
ZWC 70-40 E/4,5	20705	1323
ZWC 70-40 E/5	21660	1384
ZWC 80-50 E/2	19062	1218
ZWC 80-50 E/2,5	19672	1257
ZWC 80-50 E/3	20282	1296
ZWC 80-50 E/3,5	21206	1355
ZWC 80-50 E/4	21816	1394

ZWC 80-50 E/4,5	22426	1433
ZWC 80-50 E/5	23350	1492

### Air curtains control units PU-ZWC

PU-ZWC-W-1,5	3819	244
PU-ZWC-W-3,0	3834	245
PU-ZWC-E15-1,1	7371	471
PU-ZWC-E30-3,0	7700	492
PU-ZWC-E30-1,5	7669	490



\_\_\_\_\_

\_\_\_\_\_

\_\_\_\_\_

1

2

3

4

—

—

—

\_\_\_\_\_

\_\_\_\_\_

\_\_\_\_\_

\_\_\_\_\_

\_\_\_\_\_

[Redacted]

[Redacted]

[Redacted]

\_\_\_\_\_

\_\_\_\_\_

\_\_\_\_\_

\_\_\_\_\_

\_\_\_\_\_

1

2

3

4

5

6

1

2

3

4

5

